

The **KERALUX® Leather Repair Set II** is ideal for visually enhancing deeper damages such as

- Cuts
- Rips
- Triangle
- Small holes
- Deeper cracks
- Deeper scratches



The set is suitable for semi-aniline and pigmented leather.

This leather repair set has been individually compiled for your leather and optimally adapted to the type and colour of leather.

Please read these instructions carefully and adhere to the individual work steps, before using the repair set!



IMPORTANT NOTES IN ADVANCE:

- >> **Before use**, please wear suitable work clothes and protect the environment from possible colour splashes (e. g. by laying out foil). The leather colour cannot be washed out.
- >> The **Repair Set II** is not suitable for re-dying, only for colour-refreshing. Only suitable for plain leather surfaces, any available twotone effects will be covered. Be careful with seams in other colours!
- >> **If the leather is very dry/brittle**, it must be „pre-nourished“ before using the repair set to achieve an optimal result. Therefore use the **KERALUX® Leather Balm** (not included in the repair set, please order separately). The **KERALUX® Leather Balm** refattens dried out leather and makes it wonderfully smooth again. If necessary, apply several times until the leather feels pleasantly soft again. Afterwards wait for 1 month before using the leather repair set!
- >> **If there are oily or greasy stains on the leather** (mostly dark spots on the head and armrest area), remove them with the **KERALUX® Degreaser Spray** before using the repair set. (The degreaser spray is not included in the repair set, please order separately).
- >> We recommend to do all work steps with calmness and time to optimize the result.
- >> Treat area by area (seat area from seam to seam), if this area/seat area is okay, then work on the next area/seat area with the colour, and so on.
- >> Stop work immediately if the appearance becomes unsightly, uneven, flaky or a white haze appears/occurs. In this case, please contact us and send us pictures by e-mail if possible.

1 Repair of superficial rips or cuts

1.1 Cleaning the leather with KERALUX® Strong Cleaner or

KERALUX® Cleaner Active Plus (depending on the type of leather):

Wrap a soft, lint-free cloth around the brush, put some **KERALUX® Strong Cleaner/ KERALUX® Cleaner Active Plus** on the cloth and clean the leather with light pressure thoroughly from seam to seam. Repeat if necessary, wash the cloth in lukewarm water in between. Never apply the cleaner directly to the leather. Leather with a very coarse, deep structure is best treated with the soft brush only to better reach the dirt in the deepenings. Put some cleaner on the brush and gently rub the leather with it.

Allow the foam to soak in briefly on dirtier areas. Then wipe the leather thoroughly with a damp cotton cloth. Use distilled water to prevent lime deposits. Let the leather dry well!



Tip: Always clean leather from seam to seam, not selectively!

1.2 Close the damage with KERALUX® Leather Glue

Open the cut and torn leather surface with the metal spatula so that the **KERALUX® Leather Glue** can be easily applied to the damaged area.

1.2a For very small, not too deep cuts/cracks, the leather glue is applied very sparingly to the damaged area, so that there is no excessive leather glue. Apply some leather glue to the mixing bowl, remove some of it with a toothpick and spread sparingly on the damage.

Absolute maximum processing time 30-45 seconds!

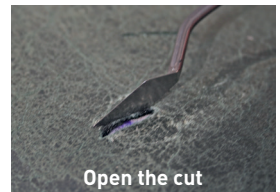
IMPORTANT: It is essential to remove excessive leather glue (by rubbing it off while it is still damp), otherwise adhesion problems with **KERALUX® Filler** and/or **KERALUX® Leather Colour „Pigment Plus“** will occur.

Check after approx. 3-5 minutes, whether the spot has been closed/glued properly. If not, repeat the procedure.

1.2b In case of deeper damage (not through the entire cross-section), apply some **KERALUX® Leather Glue** to the mixing bowl, use the spatula to take off some of it and quickly put it into the damaged area. Close the damage immediately. Processing time max. 30-45 seconds!

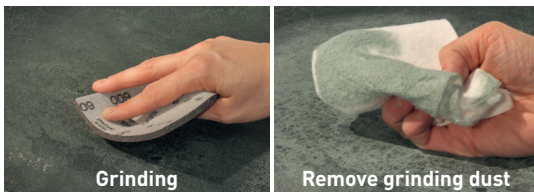
IMPORTANT: It is essential to remove excessive leather glue (by rubbing it off while it is still damp), otherwise adhesion problems with **KERALUX® Filler** and/or **KERALUX® Leather Colour „Pigment Plus“** will occur.

Check after approx. 3-5 Min. minutes, whether the spot has been closed/glued properly. If not, repeat the procedure.



1.3 Levelling of the surface by grinding

Smooth roughened areas with the 600 grinding pad. To do this, work in light circular movements carefully over the roughened surface with light pressure until the leather surface feels evenly smooth again. Remove the grinding dust with a clean, dry and lint-free cloth. Rub several times over the sanded surface with light pressure, always use a fresh piece of the cloth, so that the grinding dust is removed well.



1.4 Preparation of the surface for colour absorption

This important step is to slightly degrease and prepare the surface so that the following products can adhere to the leather surface. If this step is not processed properly, adhesion problems of the repair products occur, which means that these peel off/wear out „like sun-burn“ very quickly during use.

Put on the disposable gloves, apply some **KERALUX® Soft-/Strong Remover** (depending on the type of leather) to a clean, lint-free cloth and rub it in. Clean the surface to be repaired carefully from seam to seam in circular movements, but thoroughly and with light pressure – pretest on a hidden area how quickly the existing colour dissolves!

Remove any remaining **KERALUX® Leather Glue** carefully but thoroughly with the **KERALUX® Soft-/Strong Remover**.

After that let it dry well!



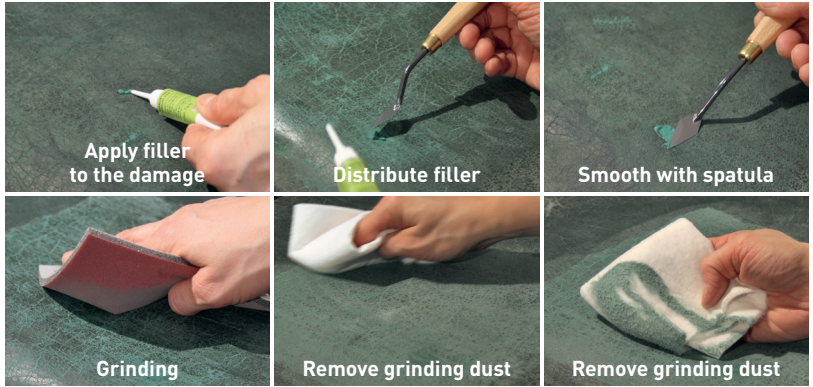
1.5 Filling the surface with KERALUX® Filler

KERALUX® Filler is adapted to the basic colour of the leather and is therefore an optimal basis for the subsequent colouring of the leather surface.

Remove the cap from the tube and screw on the cannula. Use scissors to cut off the desired opening size of the cannula. Now apply the filler to the damage/ evenly distribute and smooth with the metal spatula. Allow to air dry (at normal room temperature) for approx. 1-2 hours, depending on the amount of applied filler. Repeat procedure until the damaged area has been filled completely.

When the **KERALUX® Filler** is completely dried (after approx. 2 hours at normal room temperature), the area can be carefully sanded and smoothed with the 600 grinding pad in circular movements with light pressure.

Remove the grinding dust with a clean, dry and lint-free cloth. Rub several times over the sanded surface with light pressure, always use a fresh piece of the cloth, so that the grinding dust is removed well.



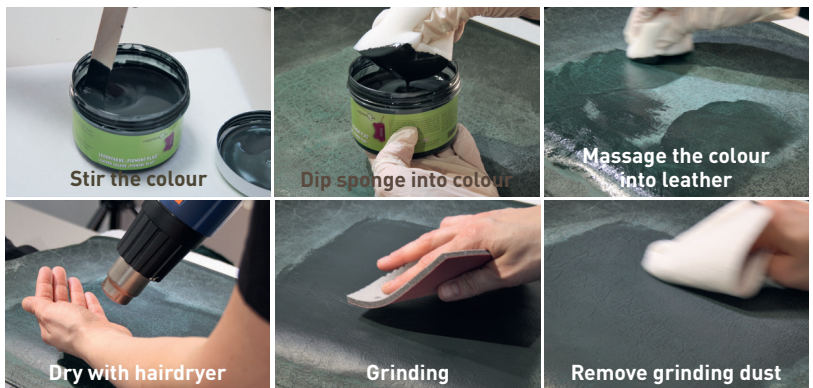
Optionally a clean, lint-free cloth can be moistened with some Soft-/Strong Remover. Rub the remover into the cloth and carefully smooth the repair area, which was treated with **KERALUX® Filler**, then allow to dry thoroughly.

1.6 Colouring of the leather surface with **KERALUX® Leather Colour „Pigment Plus“**

Stir the **KERALUX® Leather Colour „Pigment Plus“** thoroughly with a wooden spatula until no more pigments (sediment) are visible! Put on disposable gloves, dip a clean, dry and fine-pored sponge slightly into the **KERALUX® Leather Colour „Pigment Plus“**. Wipe off the excess colour at the edge of the can.

Dab an evenly thin, slightly more covering coat of colour, on the with **KERALUX® Filler** treated areas. Then massage the leather colour into the surface evenly from seam to seam in circular movements. Dry (lukewarm!!) with a hairdryer or heat gun.

If the surface is still slightly rough after thorough drying, sand with the 1000 grinding pad in light circular movements with light pressure. Remove the grinding dust with a clean, dry and lint-free cloth. Rub several times over the sanded surface with light pressure, always use a fresh piece of the cloth, so that the grinding dust is removed well.



Now dab the **KERALUX® Leather Colour „Pigment Plus“** evenly thin with the sponge from seam to seam to achieve a beautiful, thin and even colour layer. Dry (lukewarm!!!) with a hairdryer or heat gun.

Repeat the last two procedures, dab on the leather colour and dry blow dry, max. one more time. Thus there are in total max. 3 layers of the **KERALUX® Leather Colour „Pigment Plus“**! After dabbing the colour onto the surface, do not spread it again with the sponge, as the stripes may remain visible.



1.7 Colour Fixation with KERALUX® Top Finish Spray

Finally, spray on **KERALUX® Top Finish Spray** (matt, semi-brilliant or brilliant – depending on the matt/gloss level of the leather) **two times** as follows:

Pretest on a hidden area. Use mask. Shake bottle thoroughly – counted at least two minutes from the audible stop of the mixing ball. Spraying distance 20-25 cm. Spray a thin, even layer crosswise on the dry, with leather colour treated surface and dry with a lukewarm hairdryer.

Repeat this procedure. In between, shake can repeatedly, otherwise it may drip.

If drops form on the spray head, wipe immediately with a clean cloth. Let the top finish dry overnight.



Detailed step-by-step video instructions can be found on our website

www.moebelpflegeshop.de/en

2 Repair of deep cuts, rips, triangle through the entire leather cross section

2.1 Cleaning the leather with KERALUX® Strong Cleaner or KERALUX® Cleaner Active Plus (depending on the type of leather):

Wrap a soft, lint-free cloth around the brush, put some **KERALUX® Strong Cleaner/ KERALUX® Cleaner Active Plus** on the cloth and clean the leather with light pressure thoroughly from seam to seam. Repeat if necessary, wash the cloth in lukewarm water in between. Never apply the cleaner directly to the leather. Leather with a very coarse, deep structure is best treated with the soft brush only to better reach the dirt in the deepenings. Put some cleaner on the brush and gently rub the leather with it.

Allow the foam to soak in briefly on dirtier areas. Then wipe the leather thoroughly with a damp cotton cloth. Use distilled water to prevent lime deposits. Let the leather dry well!



Tip: Always clean leather from seam to seam, not selectively!

2.2 Stabilization of the damage with white net fabric

Deep damages must first be stabilized with the **white net fabric**. Cut the white net fabric slightly larger than the damage itself (approx. 5 mm all around).

Mark the centre of the white net fabric (e. g. with a ballpoint pen) so that the fabric can later be applied optimally (centrally) beneath the damage and thus supports/relieves the damaged area well.

Place the net fabric behind the damaged area using the metal spatula and fix with **KERALUX® Leather Glue**. Make sure that the glue is spreaded evenly beneath the damage so that there could not arise any accumulations, which superificially could be seen in the form of bulges/ elevations after drying.

Position the leather to be glued very quickly and press on lightly. The glue needs about 1-2 minutes to react. **Absolute maximum processing time is 30-45 seconds!**

After approx. 3-5 minutes, check whether the area has been closed/glued properly. If not, repeat the procedure.



2.3 Close the damage with KERALUX® Leather Glue

Open the cut and torn leather surface with the metal spatula so that the **KERALUX® Leather Glue** can be easily applied to the damaged area.

Apply some **KERALUX® Leather Glue** to the mixing bowl, use the spatula to take off some of it and quickly put it into the damaged area. Close the damage immediately and rub off the remaining leather glue as long as it is still damp.

Absolute maximum processing time is 30 - 45 seconds!

IMPORTANT: It is essential to remove excessive leather glue (by rubbing it off while it is still damp), otherwise adhesion problems with **KERALUX® Filler** and/or **KERALUX® Leather Colour „Pigment Plus“** will occur.

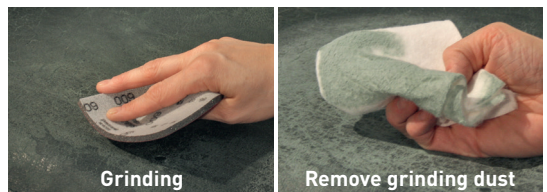
Check after approx. 3-5 minutes, whether the spot has been closed/glued properly. If not, repeat the procedure.



2.4 Levelling of the surface by grinding

Smooth roughened areas with the 600 grinding pad. To do this, work in light circular movements carefully over the roughened surface with light pressure until the leather surface feels evenly smooth again.

Remove the grinding dust with a clean, dry and lint-free cloth. Rub several times over the sanded surface with light pressure, always use a fresh piece of the cloth, so that the grinding dust is removed well.



2.5 Preparation of the surface for colour absorption

This important step is to slightly degrease and prepare the surface so that the following products can adhere to the leather surface. If this step is not processed properly, adhesion problems of the repair products occur, which means that these peel off/wear out „like sun-burn“ very quickly during use.

Put on the disposable gloves, apply some **KERALUX® Soft-/Strong Remover** (depending on the type of leather) to a clean, lint-free cloth and rub it in. Clean the surface to be repaired carefully from seam to seam in circular movements, but thoroughly and with light pressure – pretest on a hidden area how quickly the existing colour dissolves!

Remove any remaining **KERALUX® Leather Glue** carefully but thoroughly with the **KERALUX® Soft-/Strong Remover**.

After that let it dry well!



Apply Remover to cloth

Dissolve leather colour

2.6 Filling the surface with KERALUX® Filler

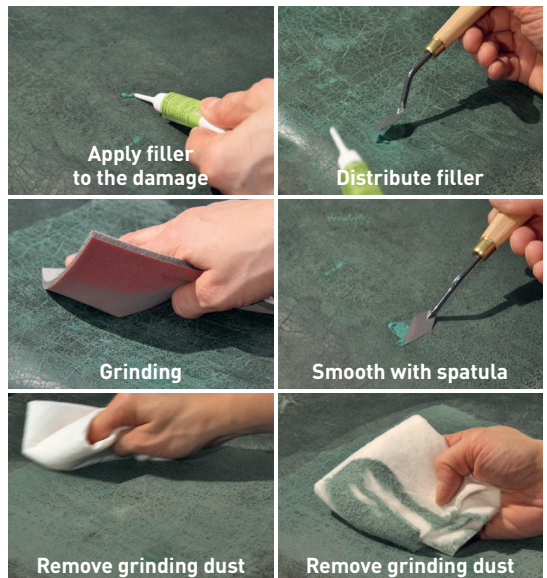
KERALUX® Filler is adapted to the basic colour of the leather and is therefore an optimal basis for the subsequent colouring of the leather surface.

Remove the cap from the tube and screw on the cannula. Use scissors to cut off the desired opening size of the cannula. Now apply the filler to the damage/ evenly distribute and smooth with the metal spatula. Allow to air dry (at normal room temperature) for approx. 1-2 hours, depending on the amount of applied filler. Repeat procedure until the damaged area has been filled completely.

When the **KERALUX® Filler** is completely dried (after approx. 2 hours at normal room temperature), the area can be carefully sanded and smoothed with the 600 grinding pad in circular movements with light pressure.

Remove the grinding dust with a clean, dry and lint-free cloth. Rub several times over the sanded surface with light pressure, always use a fresh piece of the cloth, so that the grinding dust is removed well.

Optionally a clean, lint-free cloth can be moistened with some Soft-/Strong Remover. Rub the remover into the cloth and carefully smooth the repair area, which was treated with **KERALUX® Filler**, then allow to dry thoroughly.



Apply filler to the damage

Distribute filler

Grinding

Smooth with spatula

Remove grinding dust

Remove grinding dust

2.7 Colouring of the leather surface with KERALUX® Leather Colour „Pigment Plus“

Stir the **KERALUX® Leather Colour „Pigment Plus“** thoroughly with a wooden spatula until no more pigments (sediment) are visible! Put on disposable gloves, dip a clean, dry and fine-pored sponge slightly into the **KERALUX® Leather Colour „Pigment Plus“**. Wipe off the excess colour at the edge of the can.

Dab an evenly thin coat of colour on the with **KERALUX® Filler** treated areas. Then massage the leather colour into the surface evenly from seam to seam in circular movements. Dry (lukewarm!!) with a hairdryer or heat gun.

If the surface is still slightly rough after thorough drying, sand with the 1000 grinding pad in light circular movements with light pressure. Remove the grinding dust with a clean, dry and lint-free cloth. Rub several times over the sanded surface with light pressure, always use a fresh piece of the cloth, so that the grinding dust is removed well.

Now dab the **KERALUX® Leather Colour „Pigment Plus“** evenly thin with the sponge from seam to seam to achieve a beautiful, thin and even colour layer. Dry (lukewarm!!) with a hairdryer or heat gun.

Repeat the last two procedures, dab on the leather colour and dry blow dry, max. one more time. Thus there are in total max. 3 layers of the **KERALUX® Leather Colour „Pigment Plus“**! After dabbing the colour onto the surface, do not spread it again with the sponge, as the stripes may remain visible.



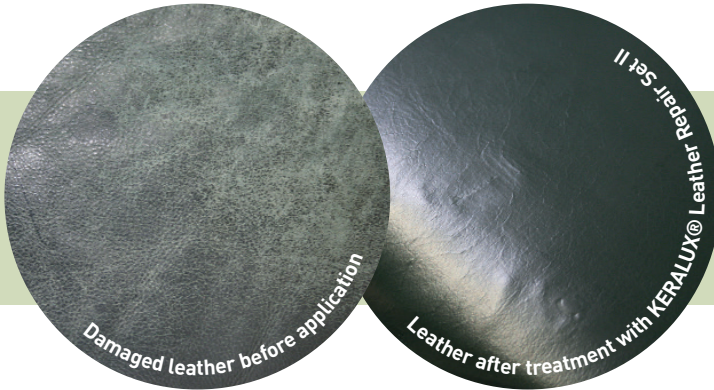
2.8 Colour Fixation with KERALUX® Top Finish Spray

Finally, spray on **KERALUX® Top Finish Spray** (matt, semi-brilliant or brilliant – depending on the matt/gloss level of the leather) **two times** as follows:

Pretest on a hidden area. Use mask. Shake bottle thoroughly – counted at least two minutes from the audible stop of the mixing ball. Spraying distance 20-25 cm. Spray a thin, even layer crosswise on the dry, with leather colour treated surface and dry with a lukewarm hairdryer.

Repeat this procedure. In between, shake can repeatedly, otherwise it may drip.

If drops form on the spray head, wipe immediately with a clean cloth. Let the top finish dry overnight.



Detailed step-by-step video instructions can be found on our website
www.moebelpflegeshop.de/en

3 Repair of small holes

3.1 Cleaning the leather with KERALUX® Strong Cleaner or KERALUX® Cleaner Active Plus (depending on the type of leather):

Wrap a soft, lint-free cloth around the brush, put some **KERALUX® Strong Cleaner/ KERALUX® Cleaner Active Plus** on the cloth and clean the leather with light pressure thoroughly from seam to seam. Repeat if necessary, wash the cloth in lukewarm water in between. Never apply the cleaner directly to the leather. Leather with a very coarse, deep structure is best treated with the soft brush only to better reach the dirt in the deepenings. Put some cleaner on the brush and gently rub the leather with it.

Allow the foam to soak in briefly on dirtier areas. Then wipe the leather thoroughly with a damp cotton cloth. Use distilled water to prevent lime deposits. Let the leather dry well!



Tip: Always clean leather from seam to seam, not selectively!

3.2 Stabilization of the damage with white net fabric

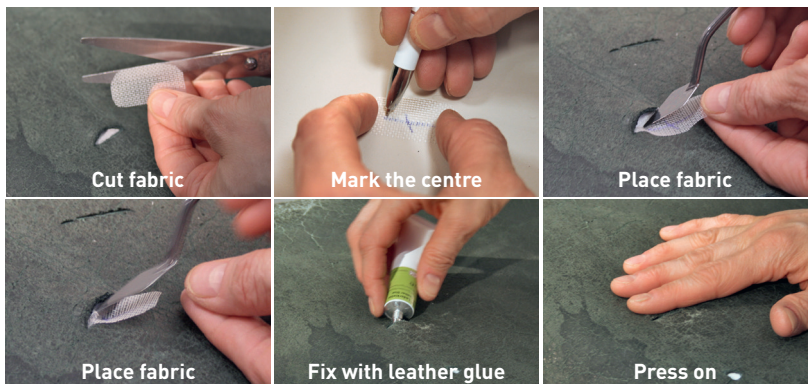
Deep damages must first be stabilized with the **white net fabric**. Cut the white net fabric slightly larger than the damage itself (approx. 5 mm all around).

Mark the centre of the white net fabric (e. g. with a ballpoint pen) so that the fabric can later be applied optimally (centrally) beneath the damage and thus supports/relieves the damaged area well.

Place the net fabric behind the damaged area using the metal spatula and fix with **KERALUX® Leather Glue**. Make sure that the glue is spreaded evenly beneath the damage so that there could not arise any accumulations, which superficially could be seen in the form of bulges/ elevations after drying.

Position the leather to be glued very quickly and press on lightly. The glue needs about 1-2 minutes to react. **Absolute maximum processing time is 30-45 seconds!**

After approx. 3-5 minutes, check whether the area has been closed/glued properly. If not, repeat the procedure.



3.3 Close the damage with KERALUX® Leather Glue

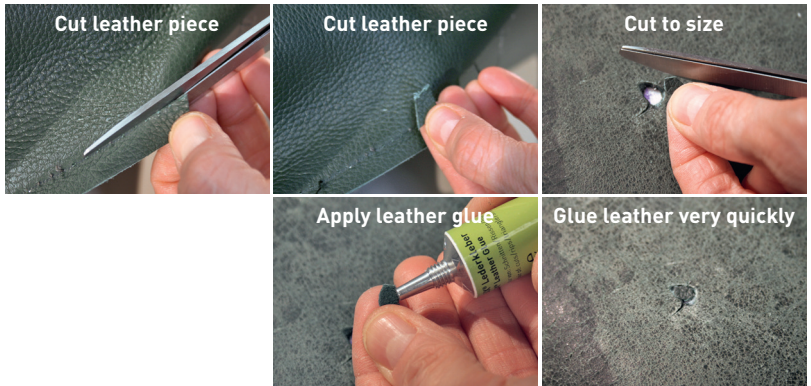
If it is possible to remove some leather at one point (e.g. a seam allowance) under the sofa/ car seat, this should be used to fill the hole. Cut as large and suitably as possible to repair the damage with the original leather. Spread leather glue evenly and thinly on the back/underside of the leather piece and insert immediately into the damaged area. Press with light pressure. The glue needs approx 1-2 minutes to react.

Absolute maximum processing time is 30-45 seconds!

IMPORTANT: It is essential to remove excessive leather glue (by rubbing it off while it is still damp), otherwise adhesion problems with **KERALUX® Filler** and/or **KERALUX® Leather Colour „Pigment Plus“** will occur.

Check after approx. 3-5 minutes, whether the spot has been closed/glued properly. If not, repeat the procedure.

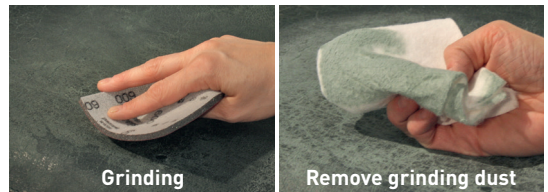
If it is not possible to glue a piece of original leather into the hole, proceed with point 3.4.



3.4 Levelling of the surface by grinding

Smooth roughened areas with the 600 grinding pad. To do this, work in light circular movements carefully over the roughened surface with light pressure until the leather surface feels evenly smooth again.

Remove the grinding dust with a clean, dry and lint-free cloth. Rub several times over the sanded surface with light pressure, always use a fresh piece of the cloth, so that the grinding dust is removed well.



3.5 Preparation of the surface for colour absorption

This important step is to slightly degrease and prepare the surface so that the following products can adhere to the leather surface. If this step is not processed properly, adhesion problems of the repair products occur, which means that these peel off/wear out „like sun-burn“ very quickly during use.

Put on the disposable gloves, apply some **KERALUX® Soft-/Strong Remover** (depending on the type of leather) to a clean, lint-free cloth and rub it in. Clean the surface to be repaired carefully from seam to seam in circular movements, but thoroughly and with light pressure – pretest on a hidden area how quickly the existing colour dissolves!

Remove any remaining **KERALUX® Leather Glue** carefully but thoroughly with the **KERALUX® Soft-/Strong Remover**.

After that let it dry well!



Apply Remover to cloth



Dissolve leather colour

3.6 Filling the surface with KERALUX® Filler

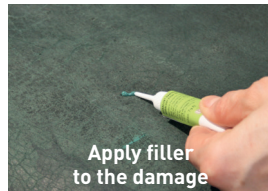
KERALUX® Filler is adapted to the basic colour of the leather and is therefore an optimal basis for the subsequent colouring of the leather surface.

Remove the cap from the tube and screw on the cannula. Use scissors to cut off the desired opening size of the cannula. Now apply the filler to the damage/evenly distribute and smooth with the metal spatula. Allow to air dry (at normal room temperature) for approx. 1-2 hours, depending on the amount of applied filler. Repeat procedure until the damaged area has been filled completely.

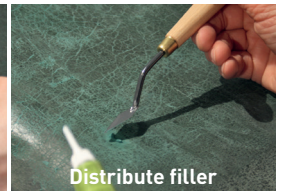
When the **KERALUX® Filler** is completely dried (after approx. 2 hours at normal room temperature), the area can be carefully sanded and smoothed with the 600 grinding pad in circular movements with light pressure.

Remove the grinding dust with a clean, dry and lint-free cloth. Rub several times over the sanded surface with light pressure, always use a fresh piece of the cloth, so that the grinding dust is removed well.

Optionally a clean, lint-free cloth can be moistened with some Soft-/Strong Remover. Rub the remover into the cloth and carefully smooth the repair area, which was treated with **KERALUX® Filler**, then allow to dry thoroughly.



Apply filler to the damage



Distribute filler



Grinding



Smooth with spatula



Remove grinding dust



Remove grinding dust

3.7 Colouring of the leather surface with KERALUX® Leather Colour „Pigment Plus“

Stir the **KERALUX® Leather Colour „Pigment Plus“** thoroughly with a wooden spatula until no more pigments (sediment) are visible! Put on disposable gloves, dip a clean, dry and fine-pored sponge slightly into the **KERALUX® Leather Colour „Pigment Plus“**. Wipe off the excess colour at the edge of the can.

Dab an evenly thin coat of colour on the with **KERALUX® Filler** treated areas. Then massage the leather colour into the surface evenly from seam to seam in circular movements. Dry (lukewarm!!) with a hairdryer or heat gun.

If the surface is still slightly rough after thorough drying, sand with the 1000 grinding pad in light circular movements with light pressure. Remove the grinding dust with a clean, dry and lint-free cloth. Rub several times over the sanded surface with light pressure, always use a fresh piece of the cloth, so that the grinding dust is removed well.

Now dab the **KERALUX® Leather Colour „Pigment Plus“** evenly thin with the sponge from seam to seam to achieve a beautiful, thin and even colour layer. Dry (lukewarm!!) with a hairdryer or heat gun.

Repeat the last two procedures, dab on the leather colour and dry blow dry, max. one more time. Thus there are in total max. 3 layers of the **KERALUX® Leather Colour „Pigment Plus“**! After dabbing the colour onto the surface, do not spread it again with the sponge, as the stripes may remain visible.



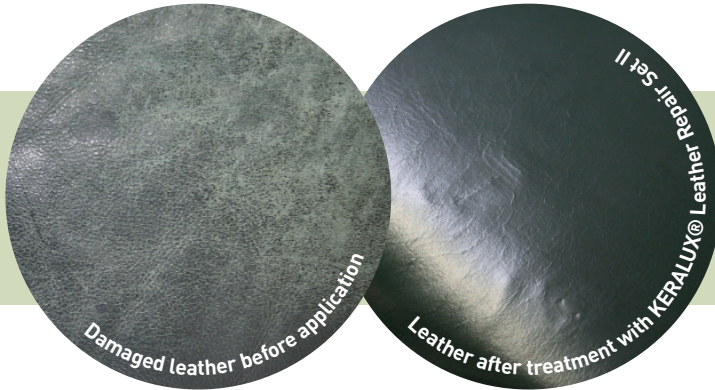
3.8 Colour Fixation with KERALUX® Top Finish Spray

Finally, spray on **KERALUX® Top Finish Spray** (matt, semi-brilliant or brilliant – depending on the matt/gloss level of the leather) **two times** as follows:

Pretest on a hidden area. Use mask. Shake bottle thoroughly – counted at least two minutes from the audible stop of the mixing ball. Spraying distance 20-25 cm. Spray a thin, even layer crosswise on the dry, with leather colour treated surface and dry with a lukewarm hairdryer.

Repeat this procedure. In between, shake can repeatedly, otherwise it may drip.

If drops form on the spray head, wipe immediately with a clean cloth. Let the top finish dry overnight.



Detailed step-by-step
video instructions can be found
on our website
www.moebelpflegeshop.de/en

4 Repair of deeper cracks/scratches

4.1 Cleaning the leather with KERALUX® Strong Cleaner or KERALUX® Cleaner Active Plus (depending on the type of leather):

Wrap a soft, lint-free cloth around the brush, put some **KERALUX® Strong Cleaner / KERALUX® Cleaner Active Plus** on the cloth and clean the leather with light pressure thoroughly from seam to seam. Repeat if necessary, wash the cloth in lukewarm water in between. Never apply the cleaner directly to the leather. Leather with a very coarse, deep structure is best treated with the soft brush only to better reach the dirt in the deepenings. Put some cleaner on the brush and gently rub the leather with it.

Allow the foam to soak in briefly on dirtier areas. Then wipe the leather thoroughly with a damp cotton cloth. Use distilled water to prevent lime deposits. Let the leather dry well!



Tip: Always clean leather from seam to seam, not selectively!

4.2 Levelling of the surface by grinding

Smooth roughened areas with the 600 grinding pad. To do this, work in light circular movements carefully over the roughened surface with light pressure until the leather surface feels evenly smooth again.

Remove the grinding dust with a clean, dry and lint-free cloth. Rub several times over the sanded surface with light pressure, always use a fresh piece of the cloth, so that the grinding dust is removed well.



Grinding



Remove grinding dust

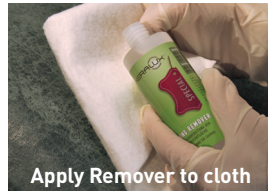
4.3 Preparation of the surface for colour absorption

This important step is to slightly degrease and prepare the surface so that the following products can adhere to the leather surface. If this step is not processed properly, adhesion problems of the repair products occur, which means that these peel off/wear out „like sunburn“ very quickly during use.

Put on the disposable gloves, apply some **KERALUX® Soft-/Strong Remover** (depending on the type of leather) to a clean, lint-free cloth and rub it in. Clean the surface to be repaired carefully from seam to seam in circular movements, but thoroughly and with light pressure – pre-test on a hidden area how quickly the existing colour dissolves!

Remove any remaining **KERALUX® Leather Glue** carefully but thoroughly with the **KERALUX® Soft-/Strong Remover**.

After that let it dry well!



Apply Remover to cloth



Dissolve leather colour

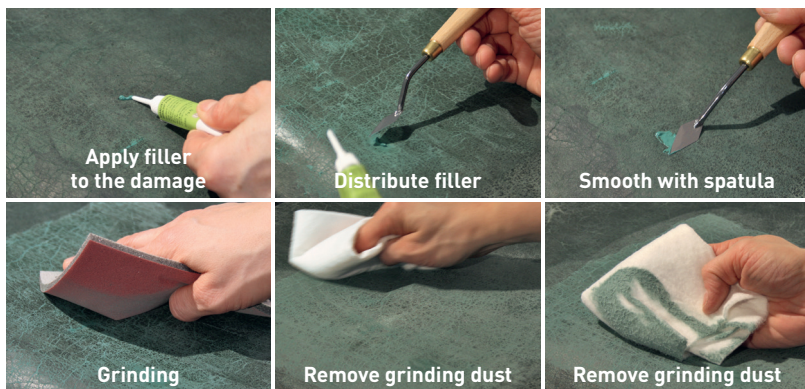
4.4 Filling the surface with KERALUX® Filler

KERALUX® Filler is adapted to the basic colour of the leather and is therefore an optimal basis for the subsequent colouring of the leather surface.

Remove the cap from the tube and screw on the cannula. Use scissors to cut off the desired opening size of the cannula. Now apply the filler to the damage/ evenly distribute and smooth with the metal spatula. Allow to air dry (at normal room temperature) for approx. 1-2 hours, depending on the amount of applied filler. Repeat procedure until the damaged area has been filled completely.

When the **KERALUX® Filler** is completely dried (after approx. 2 hours at normal room temperature), the area can be carefully sanded and smoothed with the 600 grinding pad in circular movements with light pressure.

Remove the grinding dust with a clean, dry and lint-free cloth. Rub several times over the sanded surface with light pressure, always use a fresh piece of the cloth, so that the grinding dust is removed well.



Optionally a clean, lint-free cloth can be moistened with some Soft-/Strong Remover. Rub the remover into the cloth and carefully smooth the repair area, which was treated with **KERALUX® Filler**, then allow to dry thoroughly.

4.5 Colouring of the leather surface with KERALUX® Leather Colour „Pigment Plus“

Stir the **KERALUX® Leather Colour „Pigment Plus“** thoroughly with a wooden spatula until no more pigments (sediment) are visible! Put on disposable gloves, dip a clean, dry and fine-pored sponge slightly into the **KERALUX® Leather Colour „Pigment Plus“**. Wipe off the excess colour at the edge of the can.

Dab an evenly thin coat of colour on the with **KERALUX® Filler** treated areas. Then massage the leather colour into the surface evenly from seam to seam in circular movements. Dry (lukewarm!!) with a hairdryer or heat gun.

If the surface is still slightly rough after thorough drying, sand with the 1000 grinding pad in light circular movements with light pressure. Remove the grinding dust with a clean, dry and lint-free cloth. Rub several times over the sanded surface with light pressure, always use a fresh piece of the cloth, so that the grinding dust is removed well.

Now dab the **KERALUX® Leather Colour „Pigment Plus“** evenly thin with the sponge from seam to seam to achieve a beautiful, thin and even colour layer. Dry (lukewarm!!) with a hairdryer or heat gun.

Repeat the last two procedures, dab on the leather colour and dry blow dry, max. one more time. Thus there are in total max. 3 layers of the **KERALUX® Leather Colour „Pigment Plus“**! After dabbing the colour onto the surface, do not spread it again with the sponge, as the stripes may remain visible.



4.6 Colour Fixation with KERALUX® Top Finish Spray

Finally, spray on **KERALUX® Top Finish Spray** (matt, semi-brilliant or brilliant – depending on the matt/gloss level of the leather) **two times** as follows:

Pretest on a hidden area. Use mask. Shake bottle thoroughly – counted at least two minutes from the audible stop of the mixing ball. Spraying distance 20-25 cm. Spray a thin, even layer crosswise on the dry, with leather colour treated surface and dry with a lukewarm hairdryer.

Repeat this procedure. In between, shake can repeatedly, otherwise it may drip.

If drops form on the spray head, wipe immediately with a clean cloth. Let the top finish dry overnight.



**General information:**

Pretest all products on a hidden area before use. Follow instructions for use and proceed/work exactly according to the instructions.

We cannot accept any liability for improper use.

We would like to point out that with the **KERALUX® Leather Repair Set II**, deeper damage can be optically enhanced, but can still be visible on closer inspection. The result depends on the damage itself as well as on the craftsmanship of the user.

When the leather surface has been damaged to a certain degree, a partial replacement of the leather, should be carried out. The **KERALUX® Leather Repair Set II** is only used for superficial enhancing of such damaged leathers, the durability of these leveled surfaces is very limited.

Good luck!



Detailed step-by-step
video instructions can be found
on our website

www.moebelpflegeshop.de/en